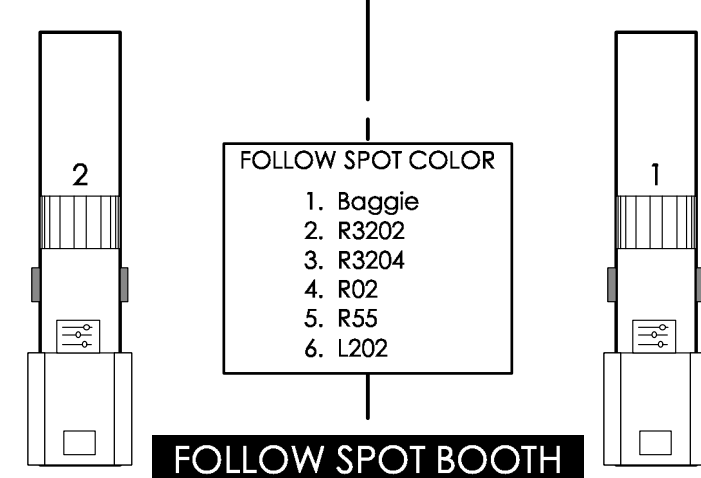
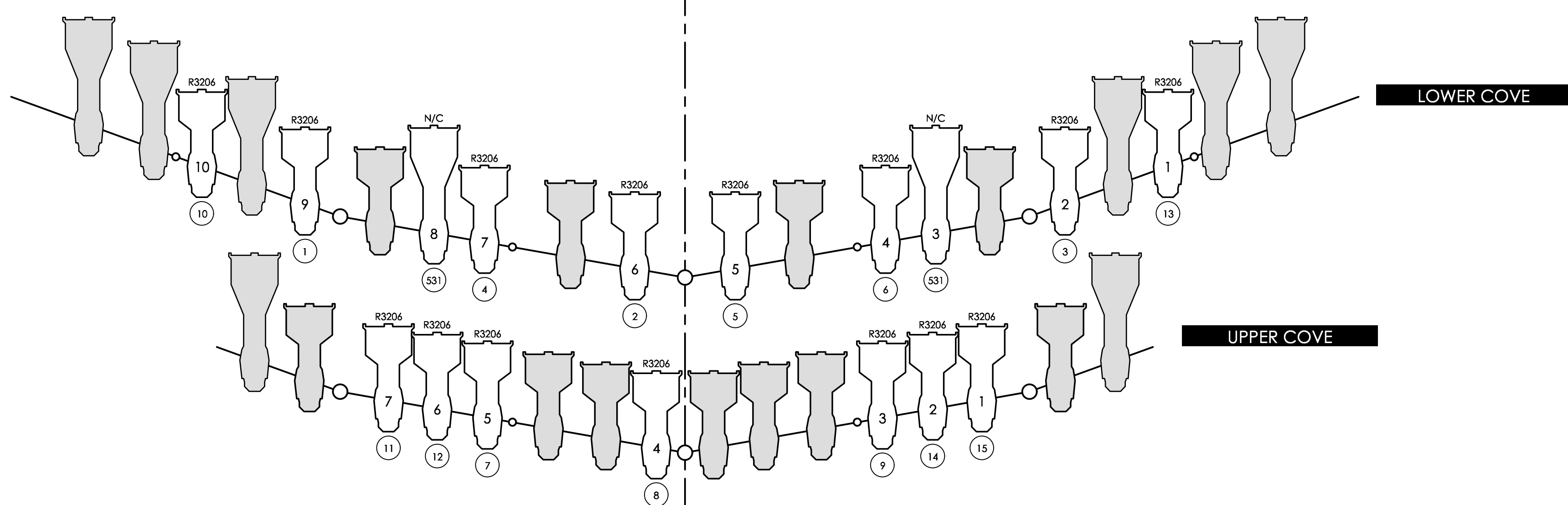
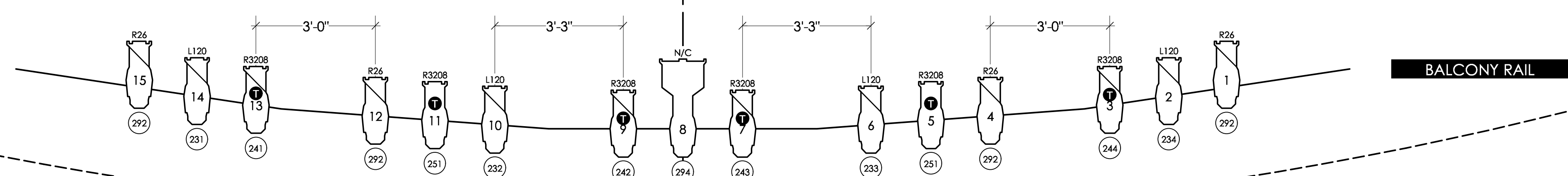
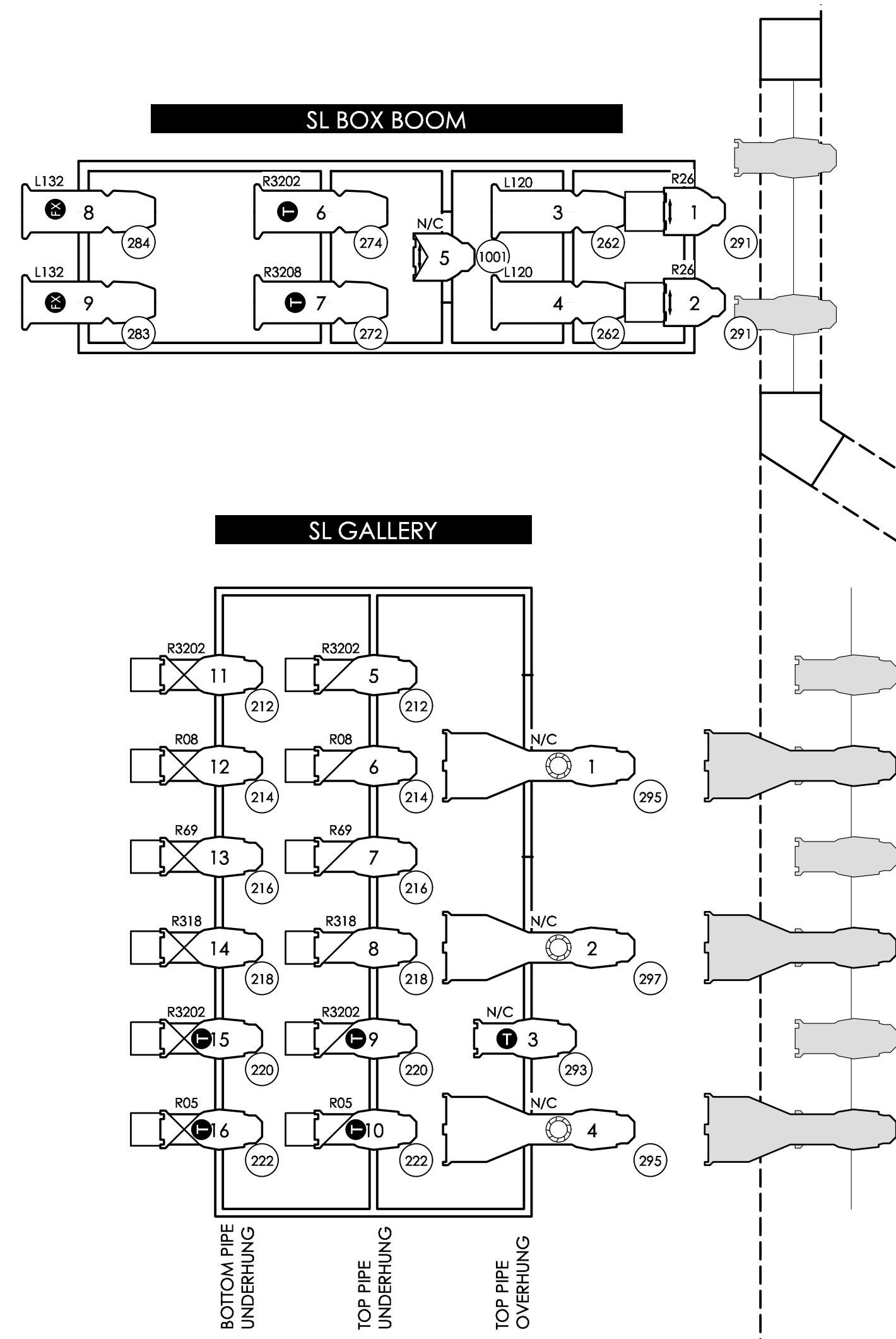


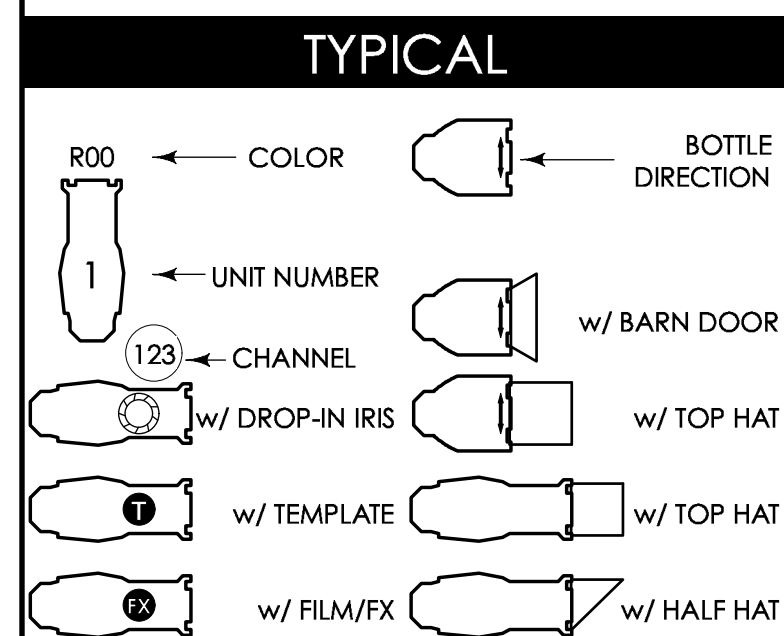
**NOTES**

- REP BOX BOOM POSITION TO BE STRUCK AND REPLACED WITH 1 1/2" SCHEDULE 40 GOALPOST WITH CROSS PIPES AT 4'6", 8'6", 10'6", 12'6", 14'6".
- 40' FROM FLOOR OF BOX BOOM TO BE KEPT CLEAR FOR VIDEO
- ALL BOX BOOM UNITS TO BE ON 18" SIDEARMS
- PLEASE DISCUSS ANY CHANGES WITH THE LIGHTING DESIGNER OR HIS ASSISTANT



## KEY TO SYMBOLS

	ETC SOURCE FOUR 5° 575W
	ETC SOURCE FOUR 10° 575W
	ETC SOURCE FOUR 14° 575W
	ETC SOURCE FOUR 19° 575W
	ETC SOURCE FOUR 26° 575W
	ETC SOURCE FOUR 36° 575W
	ETC SOURCE FOUR ZOOM 18°-30° 575W
	ETC SOURCE FOUR PAR MFL 575W
	ETC SOURCE FOUR PAR WFL 575W
	ALTMAN MINI 10 10w 12v
	ETC SELADOR DESIRE D40 VIVID NSP ROUND 161W
	ETC SELADOR DESIRE D40 VIVID NSP OVAL 161W
	ETC SELADOR DESIRE D40 VIVID MFL ROUND 161W
	ARRI STUDIO 1K FRESNEL 1KW
	ARRI 1.2K FRESNEL W/DOUSER & BARNDORR 1.2KW
	ARRI 2.5K FRESNEL W/DOUSER & BARNDORR 2.5KW
	2K FRESNEL 2KW
	COLORFORCE 72 660W
	STRAND IRS-1 CYCLIGHT 1KW
	VARIPLITE 2500 SPOT 700W
	VARIPLITE 3500 SPOT 1.2KW
	MARTIN ATOMIC 3000 STROBE 3KW
	JEM GLACIATOR X-STREAM 3.3KW
	MDG ATMOSPHERE HAZER 715W
	PRACTICAL

[illegible]

THIS DRAWING REPRESENTS DESIGN INTENT AND CONCEPT. THE DRAWING AND INFORMATION CONTAINED HEREIN REPRESENT VISUAL CONCEPTS AND CONSTRUCTION SUGGESTIONS ONLY. THE DESIGNER IS UNQUALIFIED TO DETERMINE THE STRUCTURAL, ELECTRICAL, MECHANICAL, PLUMBING, AND/OR HVAC REQUIREMENTS OF ANY PROJECT. IMPROPER ENGINEERING, ELECTRIFICATION, CONSTRUCTION, INSTALLATION, OR USE OF THIS SYSTEM, ALL MATERIALS, CONNECTIONS, AND WIRING THROUGHOUT SHALL COMPLY WITH ALL CITY, STATE, AND FEDERAL REQUIREMENTS AND ALL APPLICABLE CODES.

THESE DRAWINGS AND ALL IDEAS INDICATED THEREON OR REPRESENTED HEREON ARE OWNED BY AND REMAIN THE PROPERTY OF THE LIGHTING DESIGNER AND HAVE BEEN CREATED AND DEVELOPED FOR USE-ON, AND IN CONNECTION WITH, THIS PROJECT SPECIFICALLY.

THIS DRAWING IS PREPARED FOR REFLECTIONS TO UNDERSTAND THE PLACEMENT OF THE LIGHTING FIXTURES. NO OTHER USES, SUCH AS, BUT NOT LIMITED TO, LOCAL, BUILD OR HANG SCENES, CONFORM THIS INFORMATION WITH SCENIC DEPARTMENT.

<b>LIGHT PLOT</b>	
<b>DRAWN:</b> JN	<b>UPDATED:</b> 3 FEB 2017
<b>FILE REFERENCE:</b> ...J03_Plot/Torencia LP 2-3-17 AM.vwx	
<b>FRONT OF HOUSE FOUND PLAN</b>	
<b>PAPER SIZE:</b> ARCH E (36x48)	
<b>SCALE:</b> 1/2"=1'-0"	

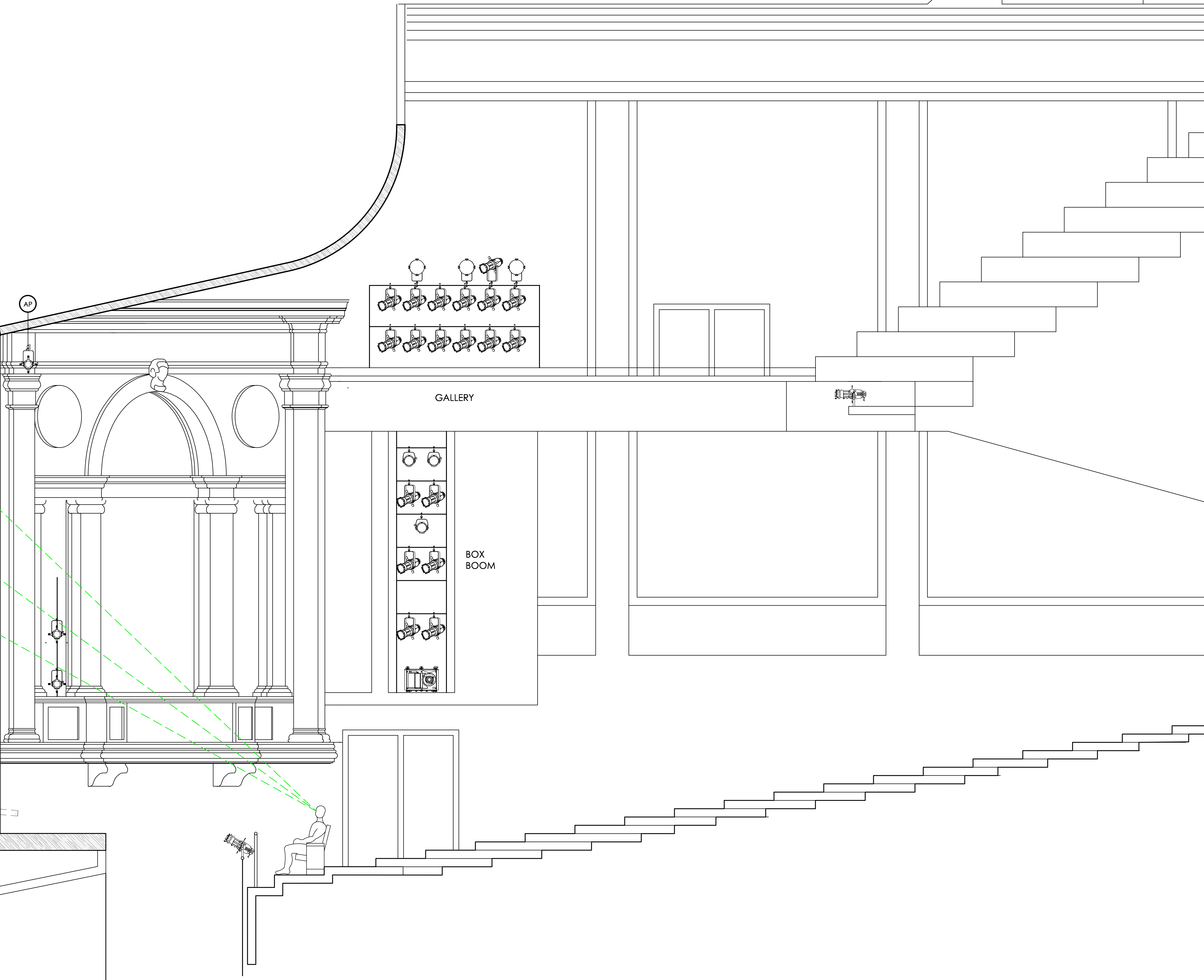
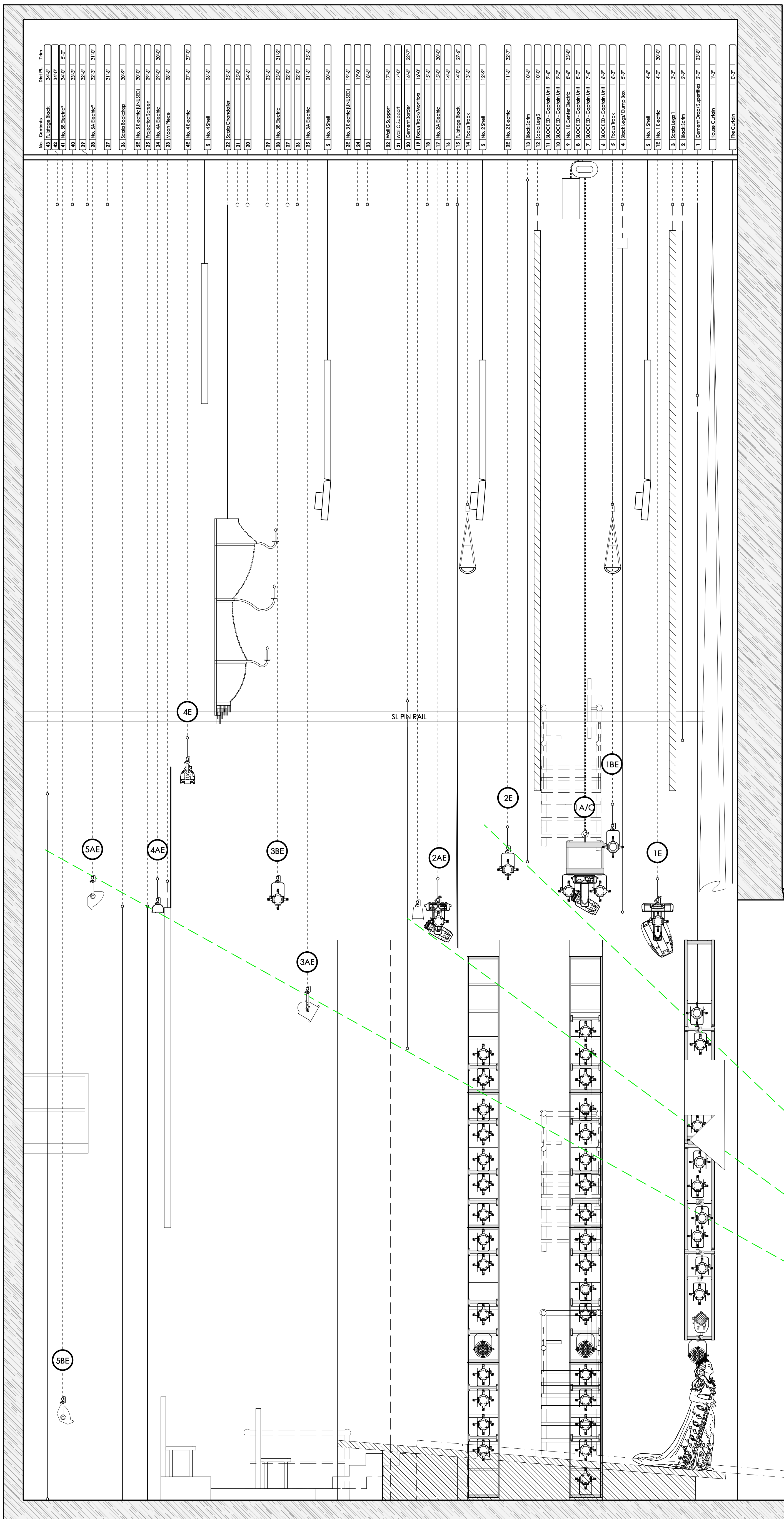












**KEY TO SYMBOLS**

ETC SOURCE FOUR 5° 575W

ETC SOURCE FOUR 10° 575W

ETC SOURCE FOUR 14° 575W

ETC SOURCE FOUR 19° 575W

ETC SOURCE FOUR 26° 575W

ETC SOURCE FOUR 34° 575W

ETC SOURCE FOUR ZOOM 15°-30° 575W

ETC SOURCE FOUR PAR MFL 575W

ETC SOURCE FOUR PAR WFL 575W

ALTMAN MINI 10 10w 12v

ETC SELADOR DESIRE D40 VIVID NSP ROUND 161W

ETC SELADOR DESIRE D40 VIVID NSP OVAL 161W

ETC SELADOR DESIRE D40 VIVID MFL ROUND 161W

ARRI STUDIO 1K FRESNEL 1KW

ARRI 1.2K FRESNEL W/DOUSER & BARN DOOR 1.2KW

ARRI 2.5K FRESNEL W/DOUSER & BARN DOOR 2.5KW

2K FRESNEL 2KW

COLORFORCE 72 660W

STRAND IRIS-1 CYCLIGHT 1KW

VARIP LITE 2500 SPOT 700W

VARIP LITE 3500 SPOT 1.2KW

MARTIN ATOMIC 3000 STROBE 3KW

JEM GLACIATOR X-STREAM 3.3KW

MDG ATMOSPHERE HAZER 715W

PRACTICAL

**TYPICAL**

ROD COLOR

BOTTLE DIRECTION

UNIT NUMBER

CHANNEL

w/ DROP-IN IRIS

w/ TEMPLATE

w/ FILM/FX

w/ BARN DOOR

w/ TOP HAT

w/ TOP HAT

w/ HALF HAT

**NOTES**

- ALL UNITS HUNG ON 1/4" CENTERS UNLESS OTHERWISE NOTED.

- ALL UNITS IN COVES AND GALLERIES IN REF SPACING.

- NOTED ELECTRIC TRIMS ARE TAKEN FROM SHOW DECK (H-GLOSS MARLEY) TO PIPE.

- NOTED BOWSER TRIMS ARE TAKEN FROM SHOW DECK (H-GLOSS MARLEY) TO BOTTOM OF SOFT GOOD.

- NO TRIMS ARE TAKEN FROM THE AUTOMATED RAKED DECK.

- NO. 18 ELECTRIC, 3A ELECTRIC, 5A ELECTRIC, AND 5B ELECTRIC ARE FLYING SUBJECTS TO CHANGE IN THEATRE.

- STEFFER IL AND IR LADDERS AS NECESSARY TO PREVENT MOVEMENT.

- TOWER & LADDER PLACEMENT MEASURED FROM PLASTER LINE TO DOWNSTAGE EDGE OF TOWER OR TRUSS AND FROM CENTERLINE TO ONSTAGE EDGE OF TOWER OR TRUSS.

- TOWERS, LADDERS, AND BOOMS ARE TO HAVE NO OBSTRUCTIONS IN FRONT OF ANY LIGHTS.

- MASE 1A AND C TRUSS WITH BLACK DUVENETTES BEFORE FLYING.

- ALL ROVER UNITS TO BE HUNG ON 17' 18" SIDINGS.

- ALL TOWER & LADDER LEGS TO BE SHORT-YOKED.

- ALL ROVER AND 18 ROVER LEGS TO BE SHORT-YOKED.

- ALL BOX BOOM UNITS TO BE HUNG ON 17' SIDINGS.

- ROYING BOOMS TO BE PLACED BY DESIGNER IN SPACE.

- ROOM MEASUREMENTS ARE FROM BASE TO SIDING.

- DROP ALL COLOR AND TRIMPLATES FROM TO FOCUS.

- PLEASE DISCUSS ALL SET ELECTRICS WITH LIGHTING DESIGNER.

- PLEASE HAVE SPARE ACCESSORIES AVAILABLE AT FOCUS (INC. TOP HALF HATS, BLACKWRAP/TAC, DONUTS, BARN DOORS, ETC.).

- PLEASE HAVE AMPLE CUTS OF R119 AND R132 AVAILABLE AT FOCUS FOR ALL UNITS.

- SEE LIGHTWEIGHT FOR TEMPLATE & ACCESSORY INFORMATION.

- PLEASE CONSULT THE DESIGNER OR HIS ASSISTANT BEFORE MAKING ANY CHANGES OR SUBSTITUTIONS.

- PRODUCTION ELECTRICIAN TO PROVIDE WORKLIGHT AND BLUE RUNNING LIGHT AS NEEDED PER STAGE MANAGEMENT REQUIREMENTS AND IN COMPLIANCE WITH THE REGULATIONS OF THE AMERICAN GUILD OF MUSICAL ARTISTS.

THIS DRAWING, REPRESENTS DESIGN INTENT AND CONCEPT. THE DRAWING AND INFORMATION CONTAINED HEREIN ARE NOT TO BE USED FOR ANY PURPOSES OTHER THAN THE INTENDED PURPOSE OF THE DRAWING. THE DESIGNER AND HIS ASSISTANT ARE NOT RESPONSIBLE FOR THE ACCURACY OF THE INFORMATION CONTAINED HEREIN. THE INFORMATION CONTAINED HEREIN IS NOT TO BE USED FOR ANY PURPOSES OTHER THAN THE INTENDED PURPOSE OF THE DRAWING. THE DESIGNER AND HIS ASSISTANT ARE NOT RESPONSIBLE FOR THE ACCURACY OF THE INFORMATION CONTAINED HEREIN.

THIS DRAWING IS THE PROPERTY OF THE DESIGNER AND HIS ASSISTANT. IT IS NOT TO BE REPRODUCED OR USED FOR ANY PURPOSES OTHER THAN THE INTENDED PURPOSE OF THE DRAWING. THE DESIGNER AND HIS ASSISTANT ARE NOT RESPONSIBLE FOR THE ACCURACY OF THE INFORMATION CONTAINED HEREIN.

COPYRIGHT © 2017 JOSEPH NAPFAL. ALL RIGHTS RESERVED.

**AJ FLETCHER OPERA INSTITUTE**  
PRESENTS

**FLORENCIA**  
EN EL AMAZONAS

**ROGER L. STEVENS CENTER**  
UNIVERSITY OF NORTH CAROLINA SCHOOL OF THE ARTS  
FEBRUARY 2017

STAGE DIRECTOR CONDUCTOR SCENIC DESIGN LIGHTING DESIGN COSTUME DESIGN PROJECTIONS DESIGN WIG & MAKEUP DESIGN AST. LIGHTING DESIGNER PRODUCTION ELECTRICIAN MASTER ELECTRICIAN AST. MASTER ELECTRICIAN	NIC MUNI CHRISTOPHER ALLEN ANDREW LUCOUT JOSEPH NAPFAL AMY MACDONALD PATRICK ANGLE DESTINEE STEELE AIDAN MARSHALL LIAM LEWIS-MARLOW ADAM WHITMER JADA HUTCHINSON
---	--

**LIGHT PLOT**

DRAWN: JN	UPDATED: 3 FEB 2017
FILE REFERENCE: C:\03\Plot\Florescia LP 2-3-17 AM.vwx	
CENTERLINE SECTION	
PAPER SIZE: ARCH E (36x48)	PLATE 6 OF SIX
SCALE: 3/8"=1'-0"	